



## PC-PUMP®

...an interactive design and evaluation software tool for downhole progressing cavity pumping systems.

### TAKE ADVANTAGE OF PC-PUMP'S FULL FUNCTIONALITY:

- Perform quick analyses, designs and evaluations for any downhole PC pumping application;
- Model production systems from surface drives to bottomhole assemblies;
- Access standard and vendor component libraries, and sophisticated hydraulic and mechanical modelling routines;
- Compare alternatives;
- Diagnose problems;
- Optimize system performance;
- Make decisions efficiently; and
- Save time and money.

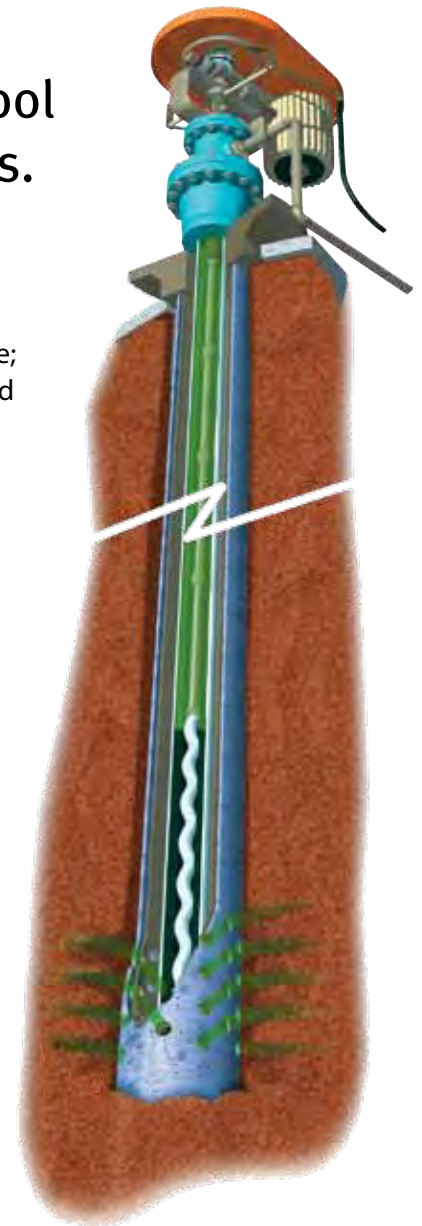
### PC-PUMP—COMPREHENSIVE EQUIPMENT DATABASE

PC-PUMP includes a comprehensive database of Progressing Cavity equipment to select from. In the event that a unique piece of equipment is considered, PC-PUMP also allows for custom equipment to be entered.

The equipment database has over:

- 2000 different pump entries
- 150 rod entries
- 50 tubing entries
- 50 coupling entries
- 100 rod guide entries

This many entries allows PC-PUMP to analyze millions of possible equipment configurations for any application.





# PC-PUMP<sup>®</sup>—TRIAL VERSION

## PC-PUMP

A trial version of PC-PUMP is available for download at no cost. The functionality of the full version is included so that all of the many features can be evaluated.

The trial version contains a synthetic equipment database that will allow for evaluation of the software. The full equipment database and the ability to create custom equipment is only available in the full version of PC-PUMP. Please contact us for further information if you require the full equipment database in a trial demo.

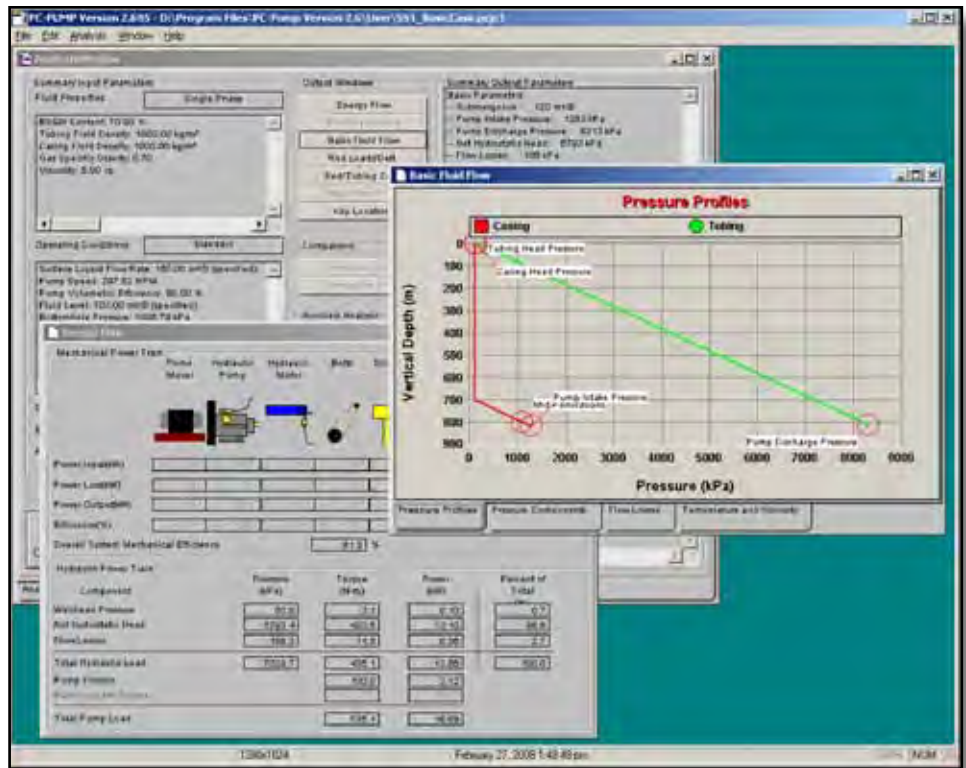
## RUN RESTRICTIONS

The trial version will stay activated for 10 calendar days or for 50 runs. Please contact C-FER if you wish to extend the period or number of runs beyond these limits. If either of these limits are reached, the software will become inactive. At this time, we hope that you have made a decision regarding whether this product meets your analysis requirements.

## SYSTEM REQUIREMENTS

The trial version must be connected to the internet at all times as the trial version of PC-PUMP will perform periodic verification. The full version does not require access to the internet.

**Download the Trial Version Today!**



Contact us to purchase PC-PUMP today. For more information or to download the trial version, visit our website at: [www.upcoglobal.com](http://www.upcoglobal.com)